

Famous themes for cello from rock, film, TV and games

Arranged for cello by Joost van Dongen
www.oogst3d.net

David Bowie - The man who sold the world



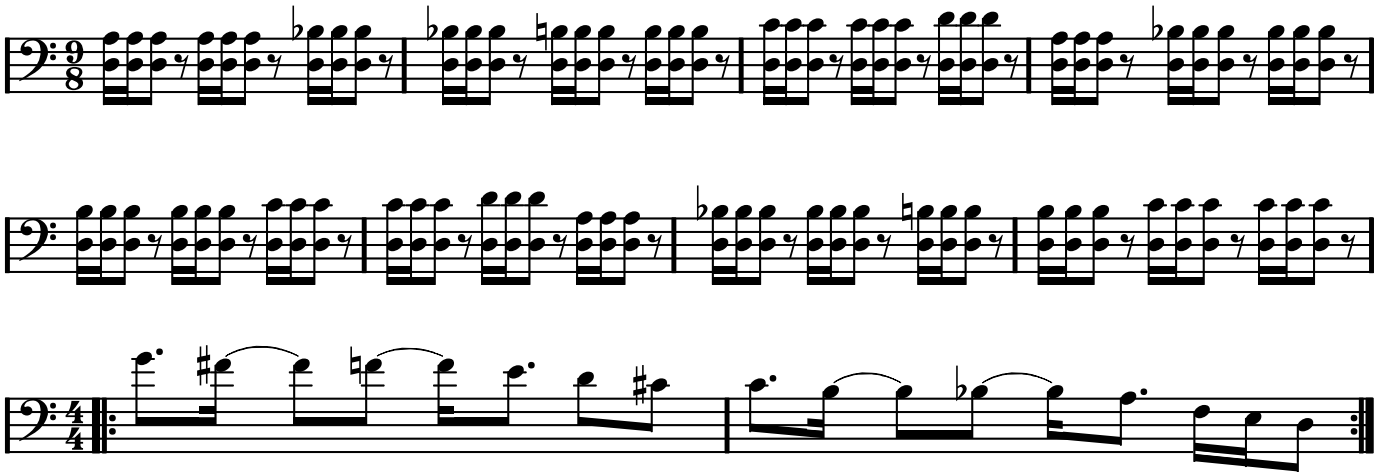
Deep Purple - Smoke on the water



Jean Michel Jarre - Oxygene IV



Led Zeppelin - Kashmir



Led Zeppelin - Stairway to heaven



Led Zeppelin - Whole lotta love



Metallica - Nothing else matters





Metallica - Orion



Nirvana - Smells like teen spirit



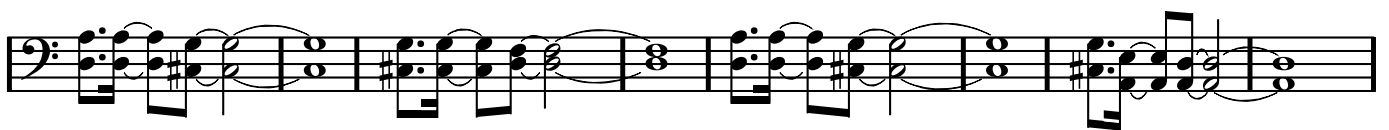
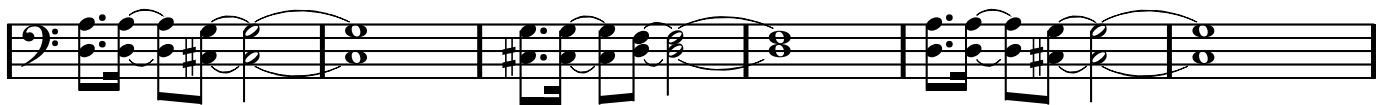
Mike Oldfield - Tubular bells



Queen - Another one bites the dust



Jeff Wayne - The eve of the war (from "The war of the worlds")



Airwolf





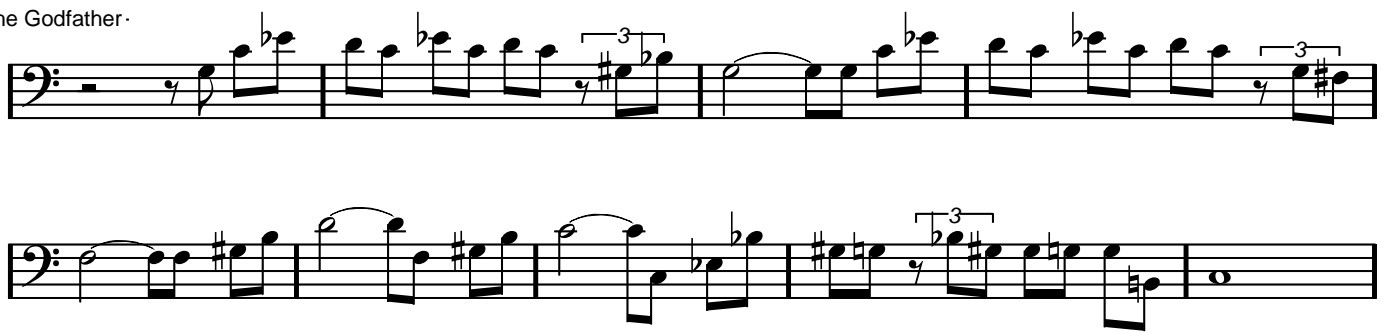
Batman TV series



Flinstones



The Godfather



Indiana Jones



James Bond

Musical notation for the James Bond theme, consisting of three staves of bass clef music. The first staff features a melodic line with eighth notes and dotted rhythms. The second and third staves provide a rhythmic accompaniment with a steady eighth-note pattern.

Jurassic Park

Musical notation for the Jurassic Park theme, consisting of a single staff of bass clef music. The melody is characterized by a series of eighth notes with a prominent interval of a major third.

Looney Tunes

Musical notation for the Looney Tunes theme, consisting of a single staff of bass clef music. The melody is a simple, rhythmic sequence of eighth notes.

Mission Impossible

Musical notation for the Mission Impossible theme, consisting of three staves of bass clef music. The first staff includes a double bar line and a change in time signature from 5/4 to 4/4. The melody is a rhythmic sequence of eighth notes.

The Muppets Show

Musical notation for the The Muppets Show theme, consisting of a single staff of bass clef music. The melody is a simple, rhythmic sequence of eighth notes.

The Pink Panther

Musical notation for the The Pink Panther theme, consisting of a single staff of bass clef music. The time signature is 12/8. The melody is a simple, rhythmic sequence of eighth notes.

A single staff of music in bass clef, 4/4 time. The key signature has one flat (B-flat). The melody consists of a series of eighth and quarter notes, ending with a dotted half note on a B-flat.

The Simpsons

A single staff of music in bass clef, 4/4 time. The key signature has one flat (B-flat). The melody is characterized by a rhythmic pattern of eighth notes with slurs, followed by a sequence of quarter notes.

Star Wars - The Imperial March

A single staff of music in bass clef, 4/4 time. The key signature has one flat (B-flat). The melody features a steady eighth-note pattern with various accidentals.

A single staff of music in bass clef, 4/4 time. The key signature has one flat (B-flat). The melody continues with eighth-note patterns and some quarter notes.

A single staff of music in bass clef, 4/4 time. The key signature has one flat (B-flat). The melody continues with eighth-note patterns and some quarter notes.

Star Wars - Main theme

A single staff of music in bass clef, 4/4 time. The key signature has one flat (B-flat). The melody starts with a triplet of eighth notes, followed by quarter notes and another triplet.

The X-files

A single staff of music in bass clef, 4/4 time. The key signature has one flat (B-flat). The melody features several triplet eighth notes, followed by a measure with a *mf* dynamic marking.

A single staff of music in bass clef, 4/4 time. The key signature has one flat (B-flat). The melody consists of quarter notes and half notes.

A single staff of music in bass clef, 4/4 time. The key signature has one flat (B-flat). The melody consists of quarter notes and half notes, ending with a double bar line.